



## 23 Burley Road Yarrowonga VIC

3 2 2

Brimming with character and offering room to breathe, this cottage-style home sits on a generous 975m<sup>2</sup> (approx.) block, just minutes from the heart of town. Lovingly owned for over 40 years, it presents an exciting opportunity to extend, renovate, or simply enjoy the space and charm it already offers.

**Type** : House  
**Price** : \$480,000  
**Land Size** : 975 sqm  
**View** : <https://www.kennedyrealestate.com.au/8393166>

### Property Highlights:

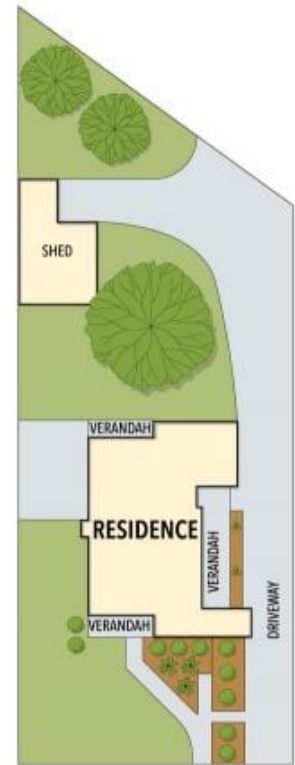
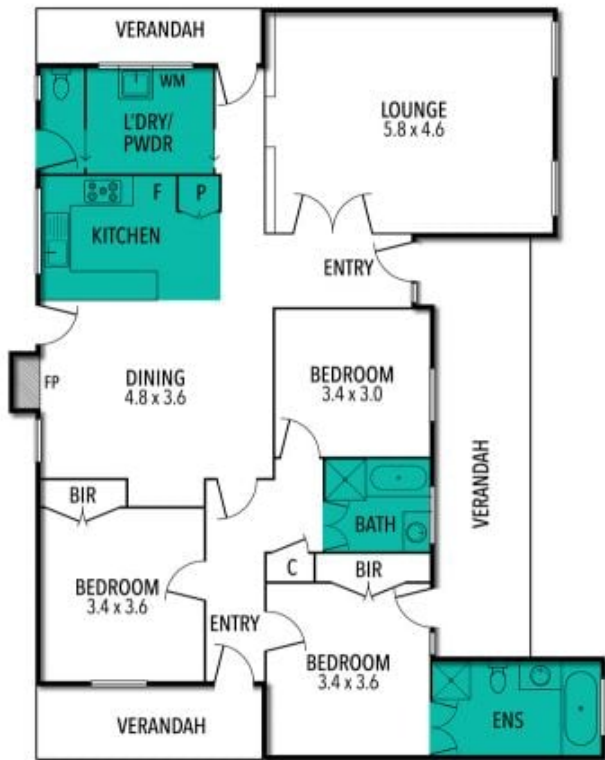
Spacious Layout Three good-sized bedrooms, including a main bedroom with ensuite, plus a separate bathroom for added convenience.

[For full version visit the website](https://www.kennedyrealestate.com.au)



**Marty Cummins**  
03 5744 1331

# 23 BURLEY ROAD, YARRAWONGA



THE ABOVE PLAN IS AN ARTIST'S IMPRESSION ONLY, IT INCLUDES ELEMENTS THAT ARE FOR DISPLAY PURPOSES ONLY AND MAY NOT BE TO SCALE. LANDSCAPING SHOWN IS INDICATIVE ONLY. DIMENSIONS ARE APPROXIMATE.

