



1/44 Ely Street Yarrowonga VIC

4 2 2

Brand new and ready for a range of buyers. This four-bedroom townhouse is recently constructed by a local quality builder. The position will please everyone who enquires as it is situated 5-minute walk to Belmore Street, Lake Mulwala, local hospital and beautiful Kennedy Park. Come inside and you will find four spacious bedrooms, ensuite to main with wall to ceiling tiles in the wet areas. Outstanding kitchen layout has been set up for fussiest of chefs with ample space for entertaining and the most modern appliances. Step outside to a lovely outdoor entertaining area and spend your afternoons enjoying the serenity of what the area has to offer. Special features of the home include reverse cycle heating and cooling for all year comfort and a spacious double garage. Inspection is a must, call Marty Cummins today.

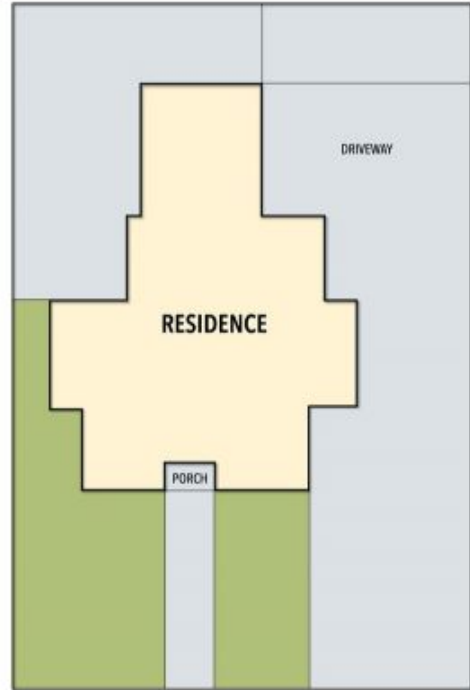
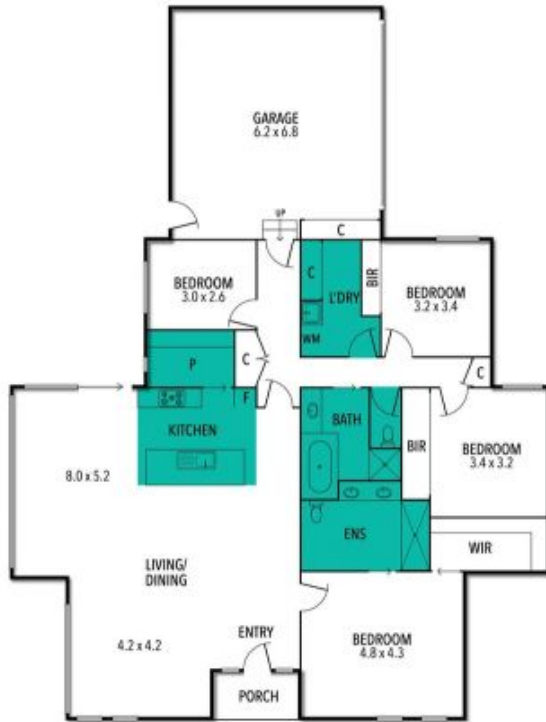
[For full version visit the website](https://www.kennedyrealestate.com.au)

Type : Townhouse
Price : \$859,000
Land Size : 600 sqm
View : <https://www.kennedyrealestate.com.au/839>
3200



Marty Cummins
03 5744 1331

1/44 ELY STREET, YARRAWONGA



THE ABOVE PLAN IS AN ARTIST'S IMPRESSION ONLY, IT INCLUDES ELEMENTS THAT ARE FOR DISPLAY PURPOSES ONLY AND MAY NOT BE TO SCALE. LANDSCAPING SHOWN IS INDICATIVE ONLY. DIMENSIONS ARE APPROXIMATE.

