

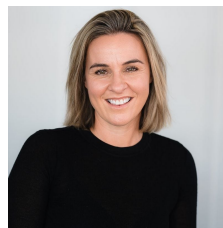


## 16 Fairway Drive Yarrowonga VIC

3 2 2

Family-friendly, with a comfortable, casual style, this classic home offers buyers a relaxed lifestyle to enjoy the best of Silverwoods Estate. The standout benefit is the secure side access, which is rare to find in Silverwoods, providing terrific room and space for extra cars, caravans, or boats. This home offers a variety of living spaces, allowing for entertainment, family life, or quiet relaxation. The kitchen is a feature, with a long stone benchtop and window splashback drawing in natural light. Offering three bedrooms, the master with a beautiful ensuite, a large light-filled walk-in pantry, and plenty of outdoor space, this home is also located close to parklands, Sebel Hotel, and Black Bull Golf Course.

**Type** : House  
**Price** : \$695,000  
**Land Size** : 712 sqm  
**View** : <https://www.kennedyrealestate.com.au/8393204>

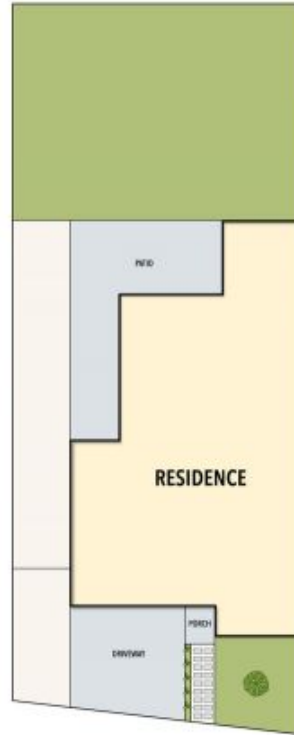


**Danielle Kennedy**  
03 5744 1331



**Caitlyn Whitelock**  
03 57 441 331

# 16 FAIRWAY DRIVE, YARRAWONGA



THE ABOVE PLAN IS AN ARTIST'S IMPRESSION ONLY, IT INCLUDES ELEMENTS THAT ARE FOR DISPLAY PURPOSES ONLY AND MAY NOT BE TO SCALE. LANDSCAPING SHOWN IS INDICATIVE ONLY. DIMENSIONS ARE APPROXIMATE.