



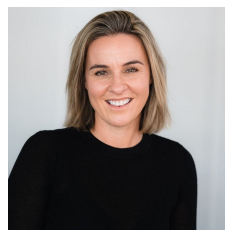
## 4A Karli Gardens Yarrowonga VIC

3 2 2

Tucked away in a peaceful cul-de-sac on a generous allotment, this exceptional residence promises a lifestyle of elegance, comfort, and serenity. From the moment you arrive, you'll be captivated by the lush, established gardens that envelop the home creating a private sanctuary perfect for both relaxing and entertaining.

Step inside and be welcomed by an abundance of natural light and a thoughtfully designed floorplan that flows effortlessly from the gourmet kitchen to the open-plan dining and living areas, and out to the expansive covered balcony. Whether you're hosting loved ones or enjoying a quiet morning coffee, this inviting space embraces seamless indoor-outdoor living.

**Type** : House  
**Land Size** : 1076 sqm  
**View** : <https://www.kennedyrealestate.com.au/8393220>



**Danielle Kennedy**  
03 5744 1331



**Caitlyn Whitelock**  
03 57 441 331

[For full version visit the website](https://www.kennedyrealestate.com.au)

# 4A KARLI GARDENS, YARRAWONGA



THE ABOVE PLAN IS AN ARTIST'S IMPRESSION ONLY, IT INCLUDES ELEMENTS THAT ARE FOR DISPLAY PURPOSES ONLY AND MAY NOT BE TO SCALE. LANDSCAPING SHOWN IS INDICATIVE ONLY. DIMENSIONS ARE APPROXIMATE.