

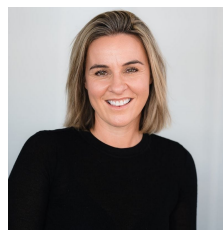


## 4 Saltbush Drive Yarrowonga VIC

An exciting opportunity to secure vacant land close to local boat ramps, this 720m allotment is undeniably appealing as a permanent tree change or an idyllic weekend retreat. It also offers a prime development and investment opportunity to address the ever-increasing demand for long-term rental accommodation in our popular town.

Situated on a corner block, this property is just moments from Lake Mulwala and Black Bull Golf Course, offering an outstanding base from which to explore award-winning wineries and the many attractions of the Murray River.

**Type** : Land  
**Price** : \$295,000  
**Land Size** : 719 sqm  
**View** : <https://www.kennedyrealestate.com.au/8393390>



**Danielle Kennedy**  
03 5744 1331



**Caitlyn Whitelock**  
03 57 441 331