



## 14 Vineyard Circuit Yarrowonga VIC

4  2  2 

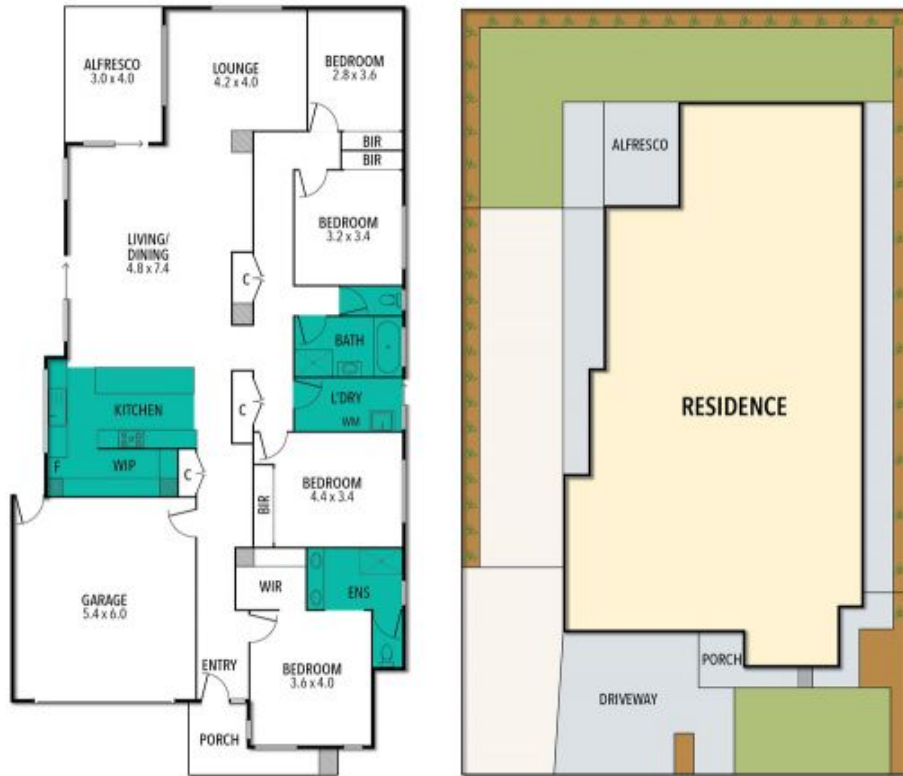
Now offered at a repositioned price to sell, this stunning 4-bedroom home on a 680m<sup>2</sup> block (approx.) is the complete package. Featuring side access for the boat or caravan, landscaped gardens and low-maintenance surrounds, it is ready to move straight in. The master boasts a walk-in robe and ensuite, with the remaining bedrooms serviced by a stylish bathroom. Two living areas, a theatre room and a sleek kitchen with walk-in pantry make family living a breeze. Sliding doors open to an alfresco area perfect for entertaining. With cooling, heating, irrigation, Colorbond fencing and a double garage, and just minutes from schools, shops and the Yarrowonga foreshore - this is your chance to secure exceptional value.

**Type** : House  
**Price** : \$ 695,000  
**Land Size** : 674 sqm  
**View** : <https://www.kennedyrealestate.com.au/8393428>



**Shelly Sage**  
03 5744 1331

# 14 VINEYARD CRESCENT, YARRAWONGA



THE ABOVE PLAN IS AN ARTIST'S IMPRESSION ONLY, IT INCLUDES ELEMENTS THAT ARE FOR DISPLAY PURPOSES ONLY AND MAY NOT BE TO SCALE. LANDSCAPING SHOWN IS INDICATIVE ONLY. DIMENSIONS ARE APPROXIMATE.

