



5 Westringia Court Yarrowonga VIC

4 2 4

Step into timeless elegance with this custom-built Lekeal home, perfectly positioned in one of Yarrowongas most sought-after locations just a short stroll to the shores of Lake Mulwala.

Set on a generous 720m² block (approx.), this property blends thoughtful design, modern finishes, and lifestyle-driven features for the ultimate in low-maintenance luxury.

Property Features:

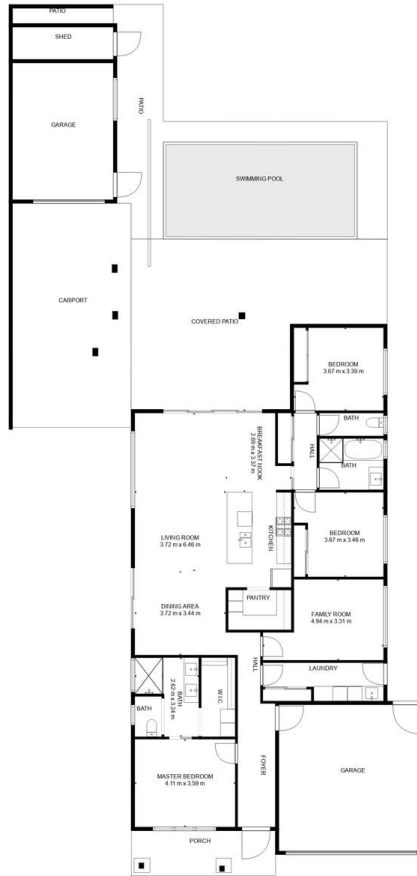
*Solar-heated in-ground pool with sunlit alfresco and established gardens

[For full version visit the website](https://www.kennedyrealestate.com.au/8393431)

Type : House
Price : \$920,000-\$950,000
Land Size : 720 sqm
View : <https://www.kennedyrealestate.com.au/8393431>



Shelly Sage
03 5744 1331



TOTAL: 163 m²

FLOOR 1: 163 m²

EXCLUDED AREAS: GARAGE: 58 m², SHED: 5 m², PATIO: 33 m²,
COVERED PATIO: 59 m², PORCH: 11 m², CARPORT: 45 m²

SIZES AND DIMENSIONS ARE APPROXIMATE, ACTUAL MAY VARY.