






1/43A Hovell Street YARRAWONGA VIC

2  **2**  **1** 

This two bedroom townhouse is one of the best locations set in town with walking distance to the main street and you will be there.

These properties are very rare at the moment throw the car keys away as you don't need to drive.

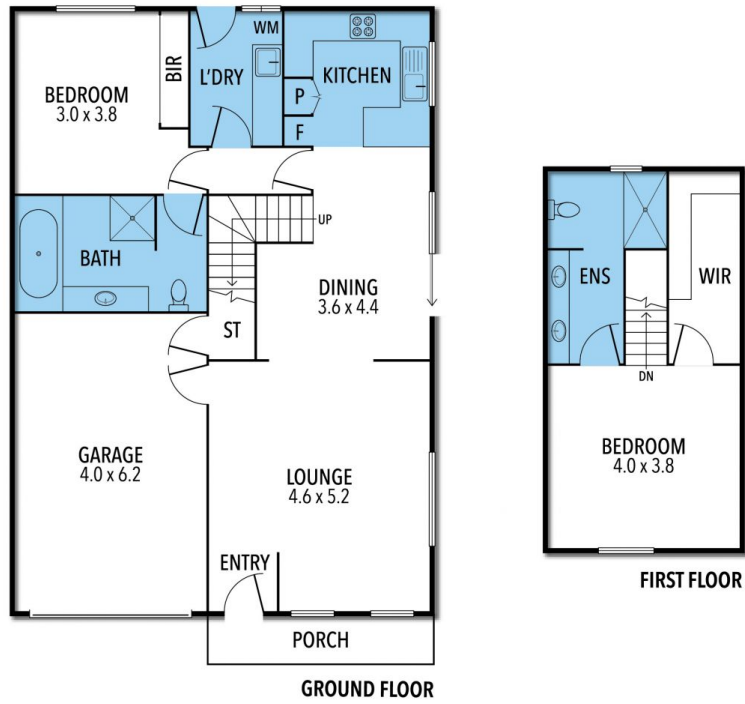
With split systems for heating and cooling and single garage and internal access for all your security needs to book your inspection today call Marty Cummins to arrange today.

Type : Unit

Land Size : 215 sqm

View : <https://www.kennedyrealestate.com.au/8395472>

1/43A HOVELL STREET



THE ABOVE PLAN IS AN ARTIST'S IMPRESSION ONLY, IT INCLUDES ELEMENTS THAT ARE FOR DISPLAY PURPOSES ONLY AND MAY NOT BE TO SCALE. LANDSCAPING SHOWN IS INDICATIVE ONLY. DIMENSIONS ARE APPROXIMATE.

KENNEDY REAL ESTATE