





12 Kingsley Court YARRAWONGA VIC

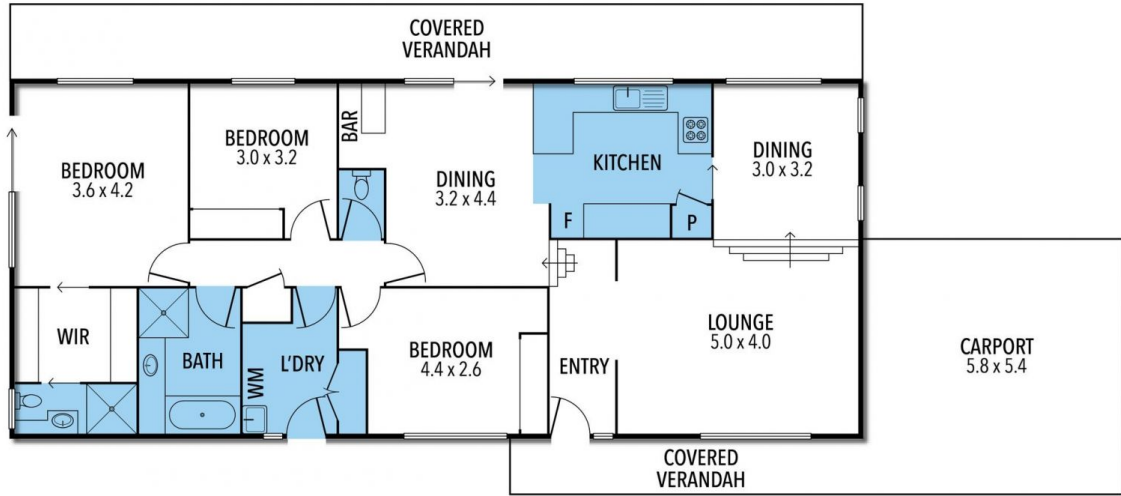
3  2  2 

This 3 bedroom, 2 bathroom home is situated in a quiet court location. Are you looking at getting into the market or looking at an investment option? This brick home with low maintenance surrounds only a short distance from the main street of Yarrawonga and local primary school and secondary school.

Additional Features include: Double carport, fully fenced yard, evaporative air-conditioning throughout, ducted gas heating great size block of 697m². Added bonus of side access leading good size shed for all your storage needs. Contact us today to arrange your inspection and discuss the possibilities with this property.

Type : House
Land Size : 697 sqm
View : <https://www.kennedyrealestate.com.au/8395527>

10 KINGSLEY



THE ABOVE PLAN IS AN ARTIST'S IMPRESSION ONLY, IT INCLUDES ELEMENTS THAT ARE FOR DISPLAY PURPOSES ONLY AND MAY NOT BE TO SCALE.
LANDSCAPING SHOWN IS INDICATIVE ONLY. DIMENSIONS ARE APPROXIMATE.

