



## 1/82 Hume Street Yarrowonga VIC

2 1 1

Perfectly positioned just minutes from Yarrowonga's main street, this beautifully maintained two-bedroom unit offers the ideal blend of comfort, convenience, and easy living.

Step inside to discover a bright, light-filled lounge, a well-designed kitchen and dining area, and two generous bedrooms. Enjoy year-round comfort with evaporative cooling and a split system for heating and cooling.

Entertain family and friends in the large undercover alfresco area, perfect for relaxing afternoons or summer BBQs. The single lock-up garage provides secure parking and extra storage space.

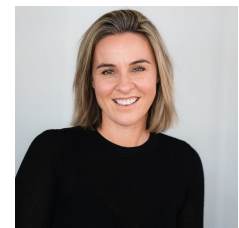
Whether you're looking for a holiday retreat, smart

[For full version visit the website](https://www.kennedyrealestate.com.au/8517586)

**Type** : Unit  
**Price** : \$ 460,000  
**Land Size** : 451 sqm  
**View** : <https://www.kennedyrealestate.com.au/8517586>



**Marty Cummins**  
03 5744 1331



**Danielle Kennedy**  
03 5744 1331

1/82 HUME ST, YARRAWONGA



THE ABOVE PLAN IS AN ARTIST'S IMPRESSION ONLY, IT INCLUDES ELEMENTS THAT ARE FOR DISPLAY PURPOSES ONLY AND MAY NOT BE TO SCALE. LANDSCAPING SHOWN IS INDICATIVE ONLY. DIMENSIONS ARE APPROXIMATE.