



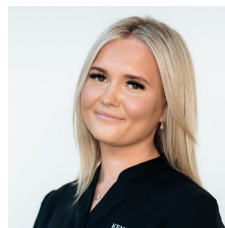
## 15 Clydesdale Loop Yarrowonga VIC

This beautifully finished Kennedy-built home offers modern comfort and style in the sought-after Glanmire Park Estate. Featuring three spacious bedrooms, an open-plan kitchen, living, and dining area, it's designed for effortless family living. The extended garage provides valuable extra storage, while the generous alfresco area is perfect for entertaining year-round. Enjoy the convenience of side access, a large backyard with a shed, and even an outdoor shower - ideal for a relaxed lifestyle in a quality estate.

3 2 2

**Type** : House

**View** : <https://www.kennedyrealestate.com.au/8549188>



**Piper Poll**  
03 57 441 331