



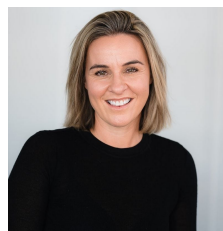
## 2/20 Coghill Street Yarrowonga VIC

Enjoy an incredibly special lifestyle in a location that places you within a short stroll of Lake Mulwala, Belmore's shopping precinct, parks, schools, and bars.

Set in the Paris end of Coghill Street in a quiet locale, this magnificent 744sqm of vacant land offers a trophy home setting to create your masterpiece.

There is no better base to call home where you can explore this incredible part of the North East Victoria and its award winning golf courses, wineries and boutique breweries.

**Type** : Land  
**Land Size** : 744 sqm  
**View** : <https://www.kennedyrealestate.com.au/8554069>



**Danielle Kennedy**  
03 5744 1331



**Caitlyn Whitelock**  
03 57 441 331