

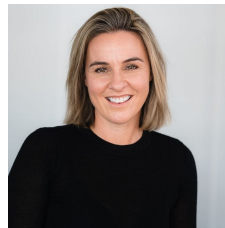


## 31 Jane Road Yarrowonga VIC

4 2 2

Imagine waking up each morning in a home perfectly positioned within walking distance to the tranquil Lake Mulwala and the natural beauty of Chinaman's Island. This spacious residence offers three bedrooms and a dedicated office, ideal for both family living and remote work. With two generous living areas, you have ample space to relax or entertain. The open-plan kitchen and living space seamlessly connect to an oversized alfresco area, perfect for outdoor dining or simply enjoying the fresh air. The outdoor space is a blank canvas, ready for your creative touch, perhaps envisioning a lush garden or even the addition of a pool to enhance your lifestyle. This home is affordable and is brimming with convenience and size making it ideal for those seeking good value.

**Type** : House  
**Price** : \$669,000  
**Land Size** : 701 sqm  
**View** : <https://www.kennedyrealestate.com.au/8572479>



**Danielle Kennedy**  
03 5744 1331



**Caitlyn Whitelock**  
03 57 441 331

# 31 JANE ROAD, YARRAWONGA



THE ABOVE PLAN IS AN ARTIST'S IMPRESSION ONLY, IT INCLUDES ELEMENTS THAT ARE FOR DISPLAY PURPOSES ONLY AND MAY NOT BE TO SCALE. LANDSCAPING SHOWN IS INDICATIVE ONLY. DIMENSIONS ARE APPROXIMATE.

