



68 Anchorage Way Yarrowonga VIC

3 2 2

Positioned moments from the iconic Sebel Yarrowonga, the shores of Lake Mulwala, and scenic walking and jogging tracks, this near-new residence delivers a refined lifestyle of comfort, space, and effortless indoor-outdoor living.

Thoughtfully designed with a generous and light-filled floorplan, the heart of the home showcases a stylish kitchen, living, and dining domain that seamlessly extends to an expansive undercover terrace, perfect for year-round entertaining, framed by beautifully landscaped, low-maintenance gardens.

The luxurious main suite is complete with a walk-in robe and private ensuite, while two additional bedrooms are privately set at the rear and serviced by a central bathroom.

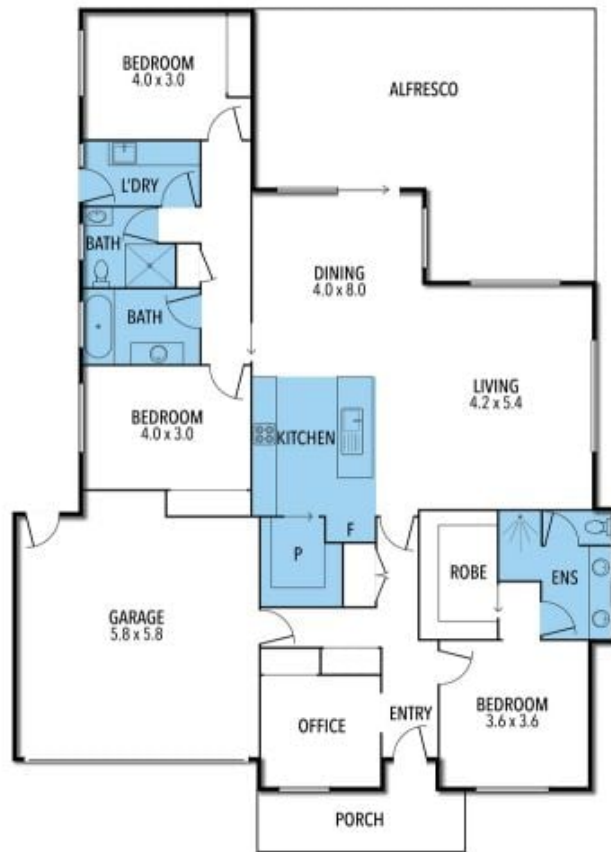
[For full version visit the website](https://www.kennedyrealestate.com.au)

Type : House
Price : \$765,000
Land Size : 456 sqm
View : <https://www.kennedyrealestate.com.au/8682069>



Marty Cummins
03 5744 1331

68 ANCHORAGE



THE ABOVE PLAN IS AN ARTIST'S IMPRESSION ONLY. IT INCLUDES ELEMENTS THAT ARE FOR DISPLAY PURPOSES ONLY AND MAY NOT BE TO SCALE. LANDSCAPING SHOWN IS INDICATIVE ONLY. DIMENSIONS ARE APPROXIMATE.

KENNEDY REAL ESTATE