

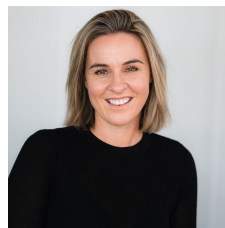


1/15 McLeod Street Yarrowonga VIC

2 1 1

Incredible unit that feels more like a private home, set on a generous corner allotment in a peaceful cul-de-sac. This charming property offers rare side access, perfect for a caravan or boat, along with a spacious yard ideal for relaxing, entertaining, or enjoying the outdoors. Inside, you'll find two comfortable bedrooms and a light-filled lounge that radiates warmth and homely appeal. Complete with a carport and an inviting sense of space and privacy, this is a truly special opportunity for those seeking comfort, convenience, and lifestyle.

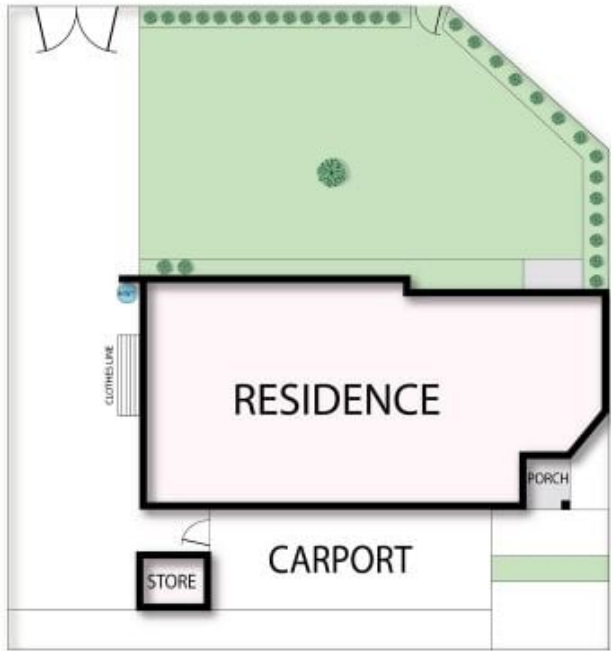
**Type** : House  
**Price** : \$410,000  
**Land Size** : 391 sqm  
**View** : <https://www.kennedyrealestate.com.au/8687278>



**Danielle Kennedy**  
03 5744 1331



**Caitlyn Whitelock**  
03 57 441 331



**KENNEDY** REAL ESTATE  
YARRAWONGA MULWALA

THE ABOVE PLAN IS AN ARTIST'S IMPRESSION ONLY, IT INCLUDES ELEMENTS THAT ARE FOR DISPLAY PURPOSES ONLY AND MAY NOT BE TO SCALE. LANDSCAPING SHOWN IS INDICATIVE ONLY, DIMENSIONS ARE APPROXIMATE.