



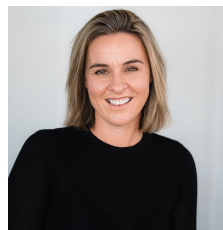
9/128 Murray Valley Highway Yarrowonga VIC

2 2 1

Whether you're searching for the perfect holiday escape, a smart investment opportunity, or your very first home, this beautifully updated property offers exceptional value in the heart of Yarrowonga. Overlooking the pool and positioned in an attractive lifestyle setting, this residence provides the flexibility to enjoy as your own private holiday retreat, lease as a holiday unit, or secure as a permanent rental investment. First home buyers will also appreciate the affordable entry point into the Yarrowonga market without compromising on location or lifestyle. Enjoy easy access into town, nearby walking tracks, and all the relaxed lifestyle benefits this sought-after area has to offer. Stylishly refreshed and ready to enjoy, this is an outstanding opportunity to secure a versatile property with strong lifestyle and investment appeal.

[For full version visit the website](https://www.kennedyrealestate.com.au/8704349)

**Type** : House  
**Price** : \$480,000  
**Land Size** : 57 sqm  
**View** : <https://www.kennedyrealestate.com.au/8704349>

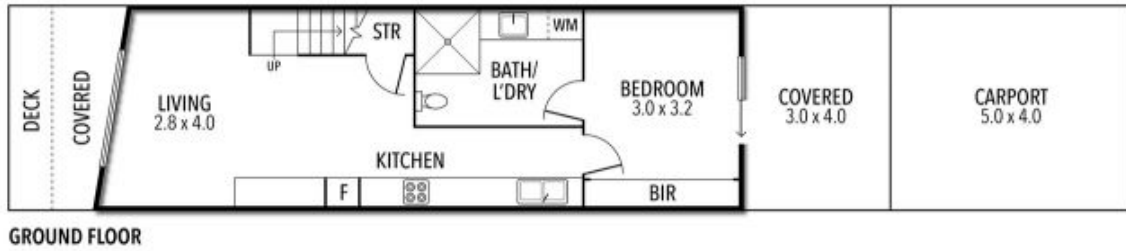


**Danielle Kennedy**  
03 5744 1331



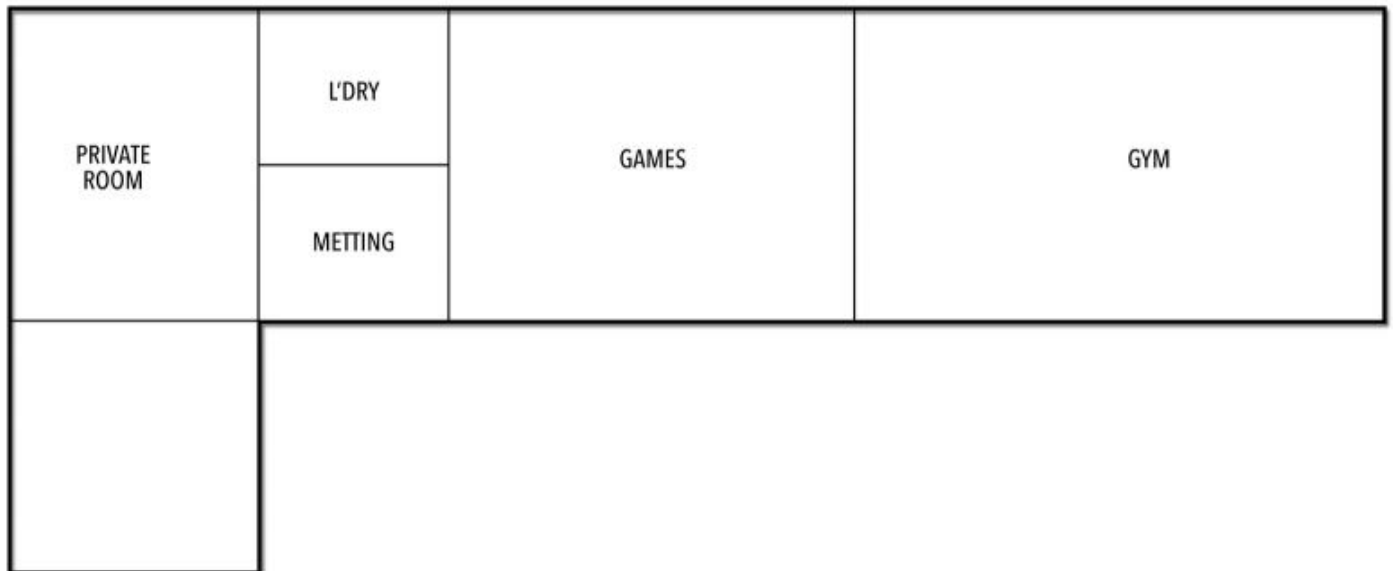
**Caitlyn Whitelock**  
03 57 441 331

SAILZ RESORT 128 MURRAY VALLEY HIGHWAY YARRAWONGA - UNIT 9



THE ABOVE PLAN IS AN ARTIST'S IMPRESSION ONLY, IT INCLUDES ELEMENTS THAT ARE FOR DISPLAY PURPOSES ONLY AND MAY NOT BE TO SCALE. LANDSCAPING SHOWN IS INDICATIVE ONLY. DIMENSIONS ARE APPROXIMATE.

SAILZ RESORT 128 MURRAY VALLEY HIGHWAY YARRAWONGA - SHED



THE ABOVE PLAN IS AN ARTIST'S IMPRESSION ONLY, IT INCLUDES ELEMENTS THAT ARE FOR DISPLAY PURPOSES ONLY AND MAY NOT BE TO SCALE. LANDSCAPING SHOWN IS INDICATIVE ONLY. DIMENSIONS ARE APPROXIMATE.